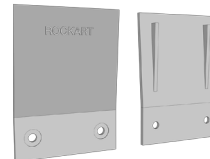




FIBERGLASS MARKER POST ANCHORS

Parts List

Model: **08-112**
Rock-Flex Anchors



08-112
Qty. = 1

08-708
Qty. = 2



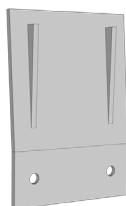
08-724
Qty. = 2



Before You Start . . .
Please make sure you've received (from ROCKART) items listed under Parts List. You will also need to provide items listed at the bottom of this page to successfully complete this installation.

Parts List

Part No.	Qty.	Description
<i>Hardware Included with 08-112 (Rock-Flex Anchor for a single side)</i>		
08-708	2	3/16 x .440 Alum Pop Rivet
08-724	2	.203 ID x .438 OD x .03 Thick #10 Stainless Steel Flat Washer
<i>Hardware Included with 08-112-2 (Rock-Flex Anchors for BOTH SIDES)</i>		
08-735	2	3/16 x .565 Alum. Pop Rivet (2 Rock-Flex Anchors)
08-724	2	.203 ID x .438 OD x .03 Thick #10 Stainless Steel Flat Washer



08-112-2
Qty. = 2

08-735
Qty. = 2



08-724
Qty. = 2



Optional Products Recommended by Rockart

Part Number	Description	Price each
08-113	Stainless Steel Anchor Hole Drilling Guide (with 2 holes spaced at 2" for Rock-Flex And Flex-Flange Anchors)	\$ 16.00
08-600	Hand-held Rivet Installation Tool	\$ 62.00
08-609	6" Utility Clamp (to hold drilling guide or anchor to post while drilling)	\$ 4.50
08-633	13/64 Solid Carbide Drill Bit (.203 Diameter) #6	\$ 34.25



08-633
13/64 Carbide Drill Bit



08-113
Stainless Steel
Drilling Guide



08-609
6" Utility Clamp



08-600
Rivet Installation Tool

Additional Tools & Supplies Necessary for Installation

- 1) Rivet Tool
- 2) Power Drill with 13/64" Bit
- 3) Work gloves
- 4) Safety Glasses
- 5) Face Mask

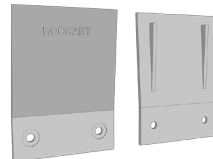
Part Drawings are not to scale.



FIBERGLASS MARKER POST ANCHORS

Install Guide

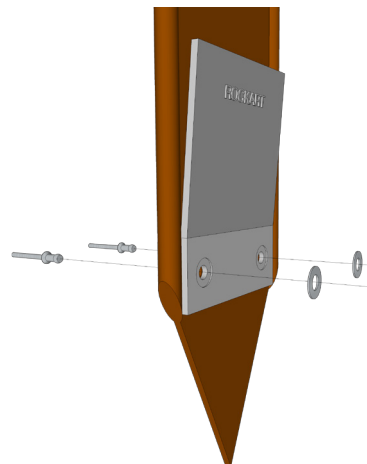
Model: **08-112**
Rock-Flex Anchors



Proper Protection is IMPORTANT!
While working with fiberglass, protect yourself from accidental inhalation or ingestion of the dust, and from getting the fibers lodged in your skin, USE PROPER PROTECTION !

INSTALLING A SINGLE ROCK-FLEX ANCHOR (ON ONE SIDE ONLY)

- 1 **DRILL** 2 holes through a ROCKART® fiberglass marker post (approx 4" above tipped end) using a power drill fitted with a 13/64" (.203) diameter carbide drill bit (Tip: Use an anchor as a drilling guide or Rockart's Steel Anchor Drilling guide 08-113).
- 2 **PLACE** a rivet (08-708) into the rivet gun. **INSERT** the rivet (from the back side) through a hole in the post until the rivet flange is flush against the fiberglass post and then through the anchor (see figure, right)
- 3 **PLACE** a washer (08-724) over the rivet head so it sits in the recessed area of the Rock-Flex anchor. **KEEP** the parts held tightly together.
- 4 **SQUEEZE** the rivet gun until it pops; the anchor should be secured firmly to the post.
- 5 **REPEAT** steps 2-4 to install second rivet



INSTALLING TWO ROCK-FLEX ANCHORS (ON FRONT & BACK SIDES)

- 1 **DRILL** 2 holes, following Step 1, above.
- 2 **PLACE** a rivet (08-735) into the rivet gun. **INSERT** the rivet through a hole in each component, in the following order: backside anchor, marker post and then the frontside anchor. The flange of the rivet should be flush against the backside anchor (see figure, right)
- 3 **PLACE** included washer (08-724) over the rivet head and into the recessed area of the Rock-Flex anchor. **KEEP** the parts held tightly together.
- 4 **SQUEEZE** the rivet gun until it pops; both anchors should be secured firmly to the post.
- 5 **REPEAT** steps 2-4 to install second rivet

